



GAT MONTHLY MEMBERSHIP PROGRESS REPORT

Results as of: 2/28/2022

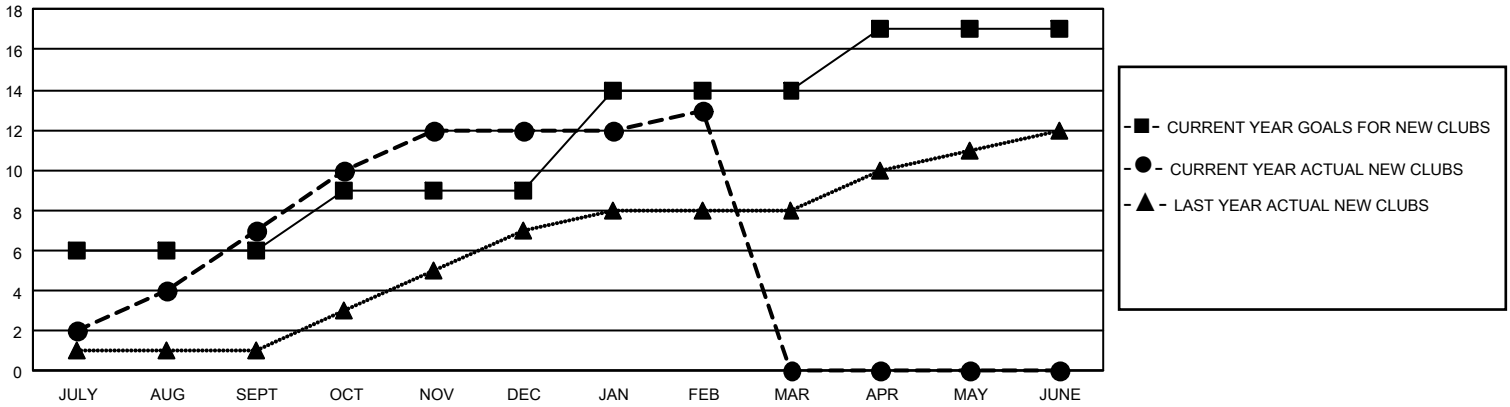
GMT Constitutional Area 5 - K, Group L

REPORT DOES NOT INCLUDE CLUBS IN UNDISTRICTED AREAS.

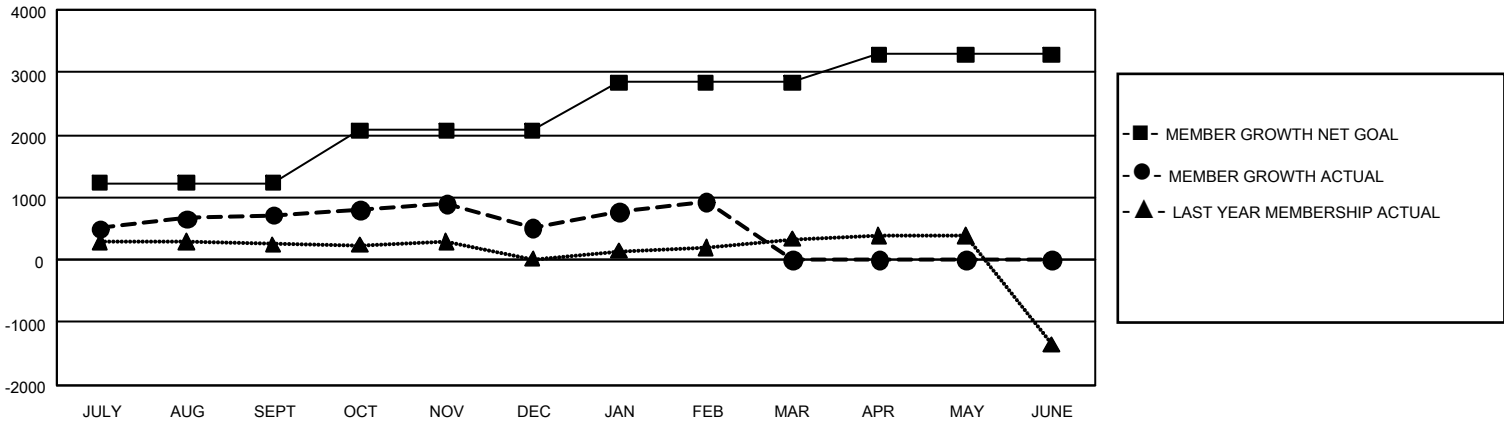
Clubs			
RESULTS FOR 2021-2022			
QUARTER	NEW CLUB GOAL	NEW CLUBS	DROPPED CLUBS
JULY/AUG/SEPT	18	7	4
OCT/NOV/DEC	9	5	1
JAN/FEB/MAR	15	1	0
APR/MAY/JUNE	9	0	0

Members			
RESULTS FOR 2021-2022			
QUARTER	MEMBER GROWTH NET GOAL	MEMBER GROWTH ACTUAL	DROPPED MEMBERS ACTUAL (including transfers)
JULY/AUG/SEPT	1230	1,459	686
OCT/NOV/DEC	840	748	917
JAN/FEB/MAR	765	607	183
APR/MAY/JUNE	450	0	0

GOALS AND ACTUAL NEW CLUBS CUMULATIVE



GOALS AND ACTUAL MEMBERS CUMULATIVE



DROPPED CLUBS: 5	449 CLUBS OF 622 ADDED 1 OR MORE NEW MEMBERS	<u>GENDER DISTRIBUTION</u>	
		MALE 18,838 (74.44%) FEMALE 6,469 (25.56%) NON BINARY 0 (0.00%) PREFER NOT TO ANSWER 0 (0.00%)	
<u>DROPPED MEMBERS</u>		CLICK HERE FOR CUMULATIVE MEMBERSHIP DATA	
DECEASED 52 CLUB CANCELLED 20 OTHER 1,714 TOTAL 1,786		TOTAL FAMILY UNIT MEMBERS 1,078 FAMILY MEMBERS PAYING HALF DUES 616	